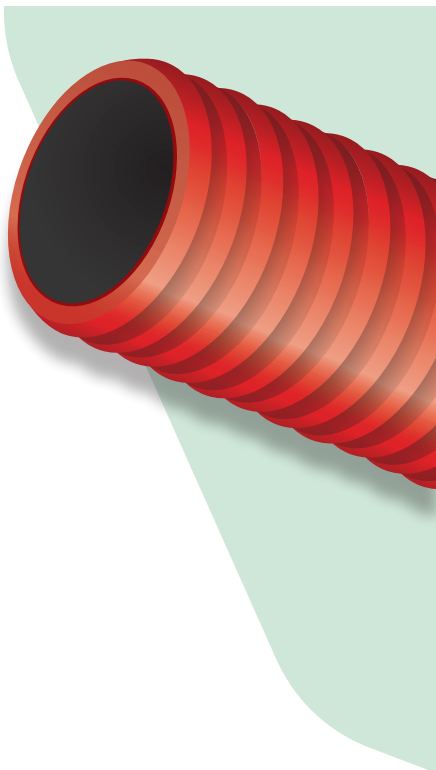


STANDARD

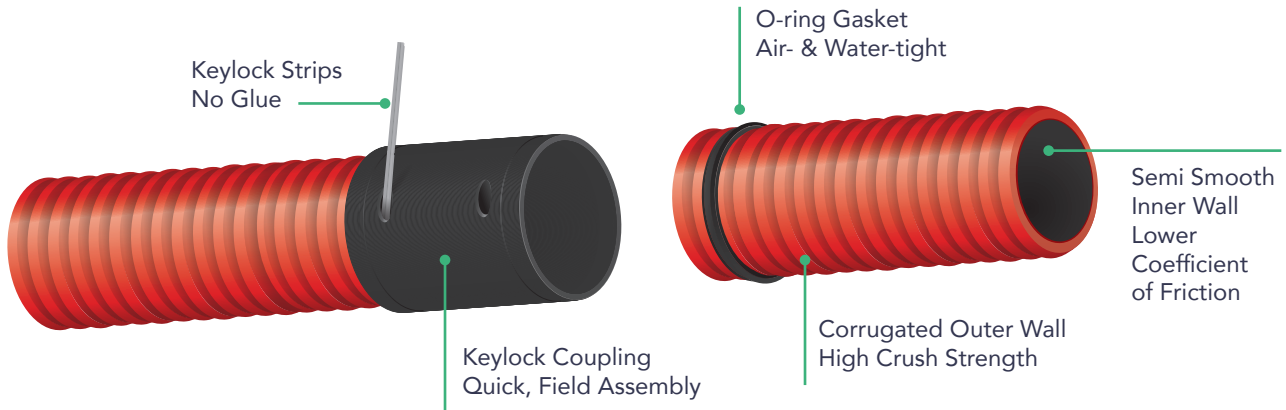
# SMOOTH-COR FLEX COUPLERS AND ADAPTERS



- ▶ Two Kit options available for joining Smooth-Cor Flex:
  - ▶ **Smooth-Cor Flex Coupler Kit** joins Smooth-Cor Flex to Smooth-Cor Flex
  - ▶ **Smooth-Cor Flex Adapter Kit** joins Smooth-Cor Flex to HDPE, PVC, FRE, and TGS
- ▶ Smooth-Cor Flex Coupler Kits include an O-ring gasket creating an air-tight and water-tight seal
- ▶ Keylock strips secure the connection, no glue required
- ▶ Tested to UL STD 514B and CSA STD C22.2 #327 requirements.

## SMOOTH-COR FLEX COUPLER KIT

(Smooth-Cor Flex to Smooth-Cor Flex)

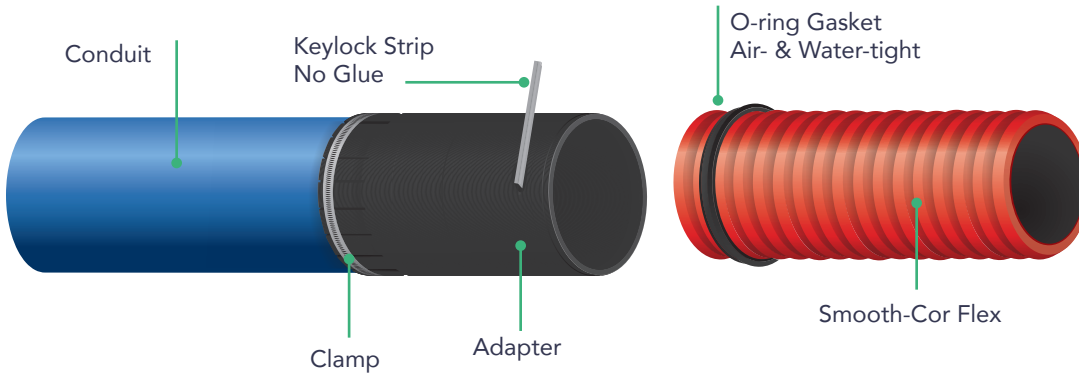


## SMOOTH-COR FLEX COUPLER KIT ORDER REFERENCE

EACH KIT INCLUDES:	SIZE	KITS/PKG	PART NUMBER
1 Keylock Coupling 2 Keylock Strips 2 O-ring Gaskets	2"	10 kits / case	20000292
	3"	6 kits / case	20000293
	4"	4 kits / case	20000231

## SMOOTH-COR FLEX ADAPTER KIT

(Smooth-Cor Flex to HDPE, PVC, FRE, Threaded Galvanized Steel)



### SMOOTH-COR FLEX ADAPTER KIT

EACH KIT INCLUDES:	SIZE	KITS/PKG	PART NUMBER
1 Adapter 1 Keylock Strip 1 O-ring Gasket	2"	10 kits / case	20000286
	3"	6 kits / case	20000287
	4"	4 kits / case	20000252